

This drawing has been prepared for the use of AECOM's client. It may not be used, modified, reproduced or relied upon by third parties, except as agreed by AECOM or as required by law. AECOM accepts no responsibility, and denies any liability whatsoever, to any party that uses or relies on this drawing without AECOM's express written consent. Do not scale this document. All measurements must be obtained from the stated dimensions.



PROJECT

Fosse Green Energy

CLIENT

Fosse Green Energy Ltd

CONSULTANT

AECOM Limited
Sunley House
4 Bedford Park
Surrey, CR0 2AP, UK
[Redacted]

LEGEND

- DCO Site Boundary
- Geophysics Assets
- Historical Hedgerows
- ES Geophysical Survey**
 - Agricultural Trend
 - Trend
 - Drain
 - Historic Cultivation
 - Archaeology
 - Ferrous
 - Geology
 - Historic Landscape Feature
 - Modern Service
 - Possible Archaeology
 - Former Field Boundary
 - Increased Response

NOTES

Contains OS data © Crown Copyright and database right 2025
Contains data from OS Zoomstack, Contains OS data © Crown copyright 2025
Historic England 2025. Contains Ordnance Survey data © Crown copyright and database right 2025. Data obtained November 2023

LEGISLATION

Regulation 5(2)(a) Infrastructure Planning (Applications: Prescribed Forms and Procedure) Regulations 2009.

ISSUE PURPOSE

DCO Submission

FIGURE TITLE

Geophysical Survey Plan

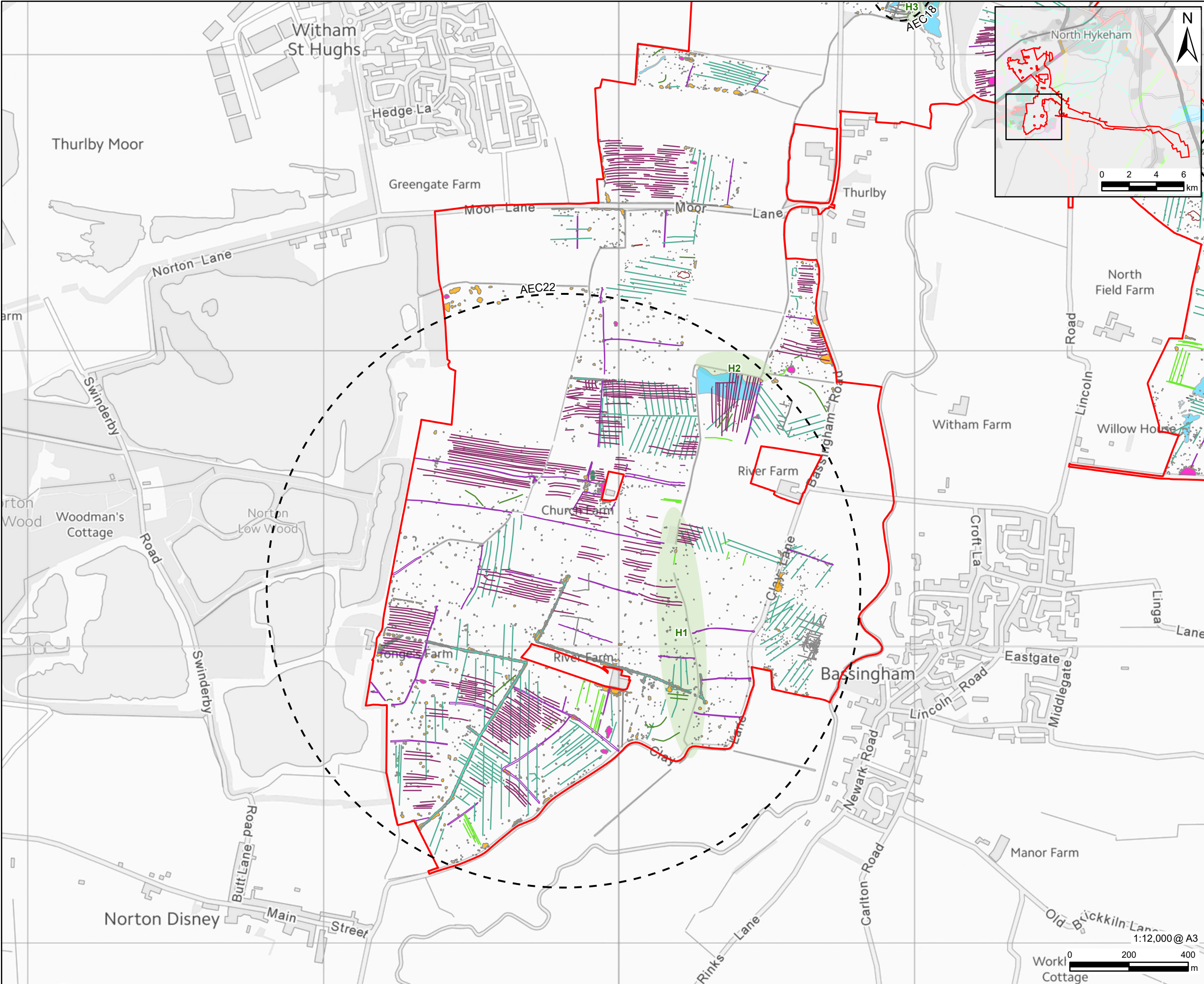
FIGURE NUMBER

Figure 7-6a Sheet 2 of 6

DOCUMENT REFERENCE

EN010154/APP/6.2.

1:12,000 @ A3
0 200 400 m



PROJECT

Fosse Green Energy



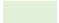








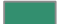



CLIENT

Fosse Green Energy Ltd

CONSULTANT

AECOM Limited
Sunley House
4 Bedford Park
Surrey, CR0 2AP, UK


LEGEND

-  DCO Site Boundary
-  Geophysics Assets
-  Historical Hedgerows
- ES Geophysical Survey**
 -  Agricultural Trend
 -  Trend
 -  Drain
 -  Historic Cultivation
 -  Archaeology
 -  Ferrous
 -  Geology
 -  Historic Landscape Feature
 -  Modern Service
 -  Possible Archaeology
 -  Former Field Boundary
 -  Increased Response

NOTES

Contains OS data © Crown Copyright and database right 2025
Contains data from OS Zoomstack, Contains OS data © Crown copyright 2025
Historic England 2025. Contains Ordnance Survey data © Crown copyright and database right 2025. Data obtained November 2023

LEGISLATION

Regulation 5(2)(a) Infrastructure Planning (Applications: Prescribed Forms and Procedure) Regulations 2009.

ISSUE PURPOSE

DCO Submission

FIGURE TITLE

Geophysical Survey Plan

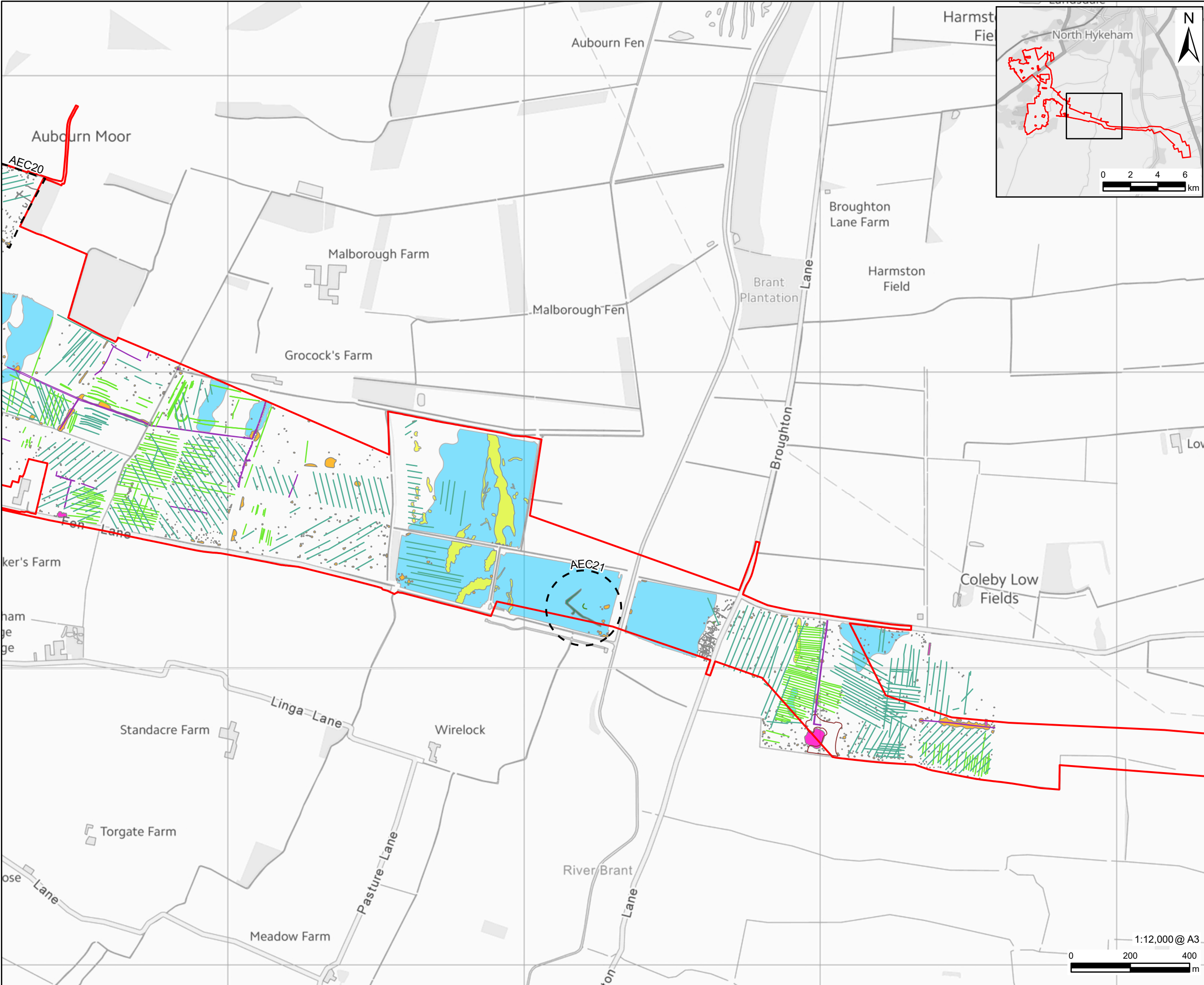
FIGURE NUMBER

Figure 7-6a Sheet 3 of 6

DOCUMENT REFERENCE

EN010154/APP/6.2.

1:12,000@ A3



This drawing has been prepared for the use of AECOM's client. It may not be used, modified, reproduced or relied upon by third parties, except as agreed by AECOM or as required by law. AECOM accepts no responsibility, and denies any liability whatsoever, to any party that uses or relies on this drawing without AECOM's express written consent. Do not scale this document. All measurements must be obtained from the stated dimensions.



PROJECT

Fosse Green Energy

CLIENT

Fosse Green Energy Ltd

CONSULTANT

AECOM Limited
Sunley House
4 Bedford Park
Surrey, CR0 2AP, UK
[Redacted]

LEGEND

- DCO Site Boundary
- Geophysics Assets
- ES Geophysical Survey
 - Agricultural Trend
 - Trend
 - Drain
 - Archaeology
 - Ferrous
 - Geology
 - Geomorphology
 - Historic Landscape Feature
 - Modern Service
 - Possible Archaeology
 - Former Field Boundary
 - Increased Response

NOTES

Contains OS data © Crown Copyright and database right 2025
Contains data from OS Zoomstack, Contains OS data © Crown copyright 2025
Historic England 2025. Contains Ordnance Survey data © Crown copyright and database right 2025. Data obtained November 2023

LEGISLATION

Regulation 5(2)(a) Infrastructure Planning (Applications: Prescribed Forms and Procedure) Regulations 2009.

ISSUE PURPOSE

DCO Submission

FIGURE TITLE

Geophysical Survey Plan

FIGURE NUMBER

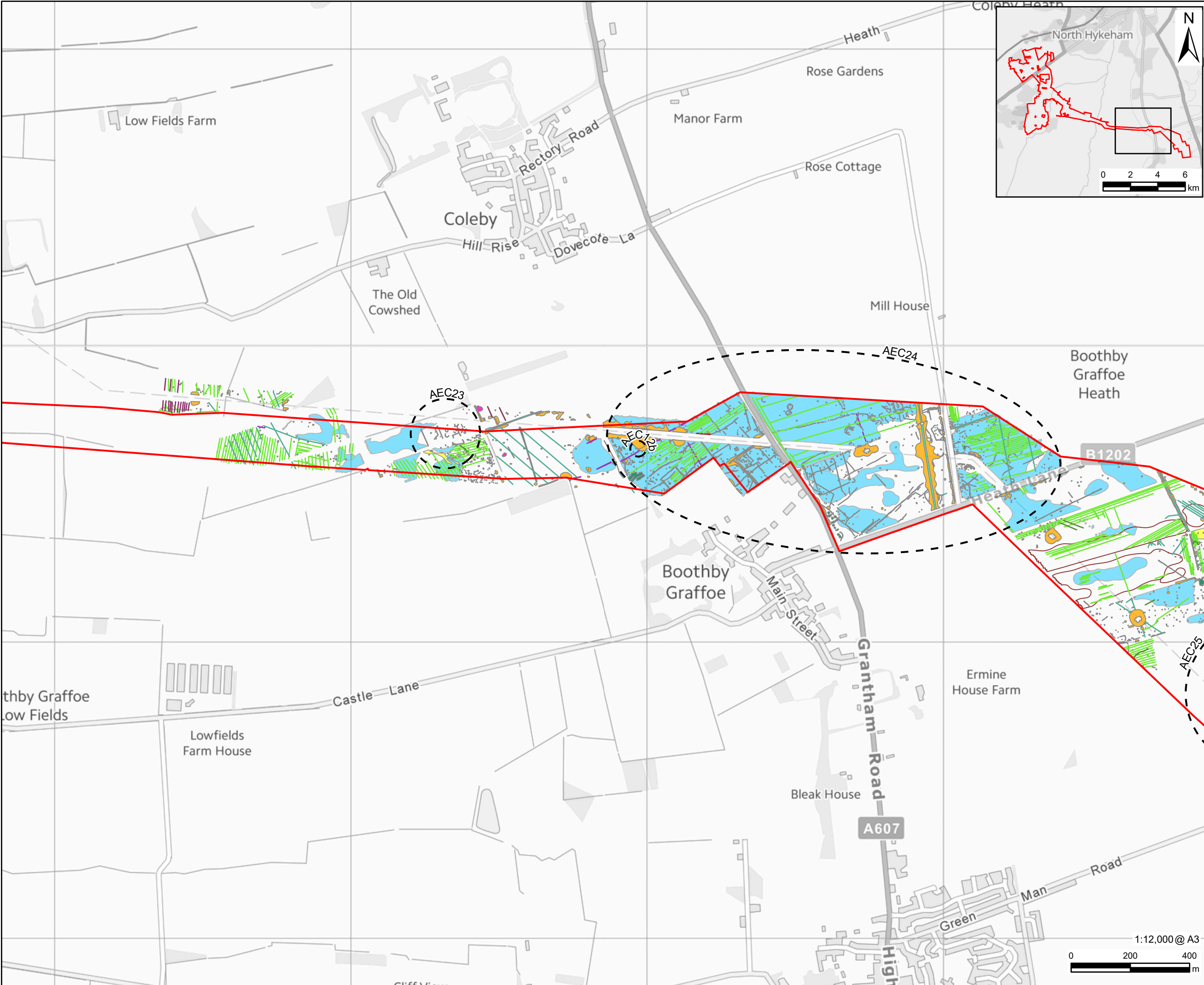
Figure 7-6a Sheet 4 of 6

REV.

02

DOCUMENT REFERENCE

EN010154/APP/6.2.



This drawing has been prepared for the use of AECOM's client. It may not be used, modified, reproduced or relied upon by third parties, except as agreed by AECOM or as required by law. AECOM accepts no responsibility and denies any liability whatsoever, to any party that uses or relies on this drawing without AECOM's express written consent. Do not scale this document. All measurements must be obtained from the stated dimensions.



PROJECT

Fosse Green Energy

CLIENT

Fosse Green Energy Ltd

CONSULTANT

AECOM Limited
Sunley House
4 Bedford Park
Surrey, CR0 2AP, UK

LEGEND

- DCO Site Boundary
- Geophysics Assets
- ES Geophysical Survey
 - Agricultural Trend
 - Trend
 - Drain
 - Historic Cultivation
 - Archaeology
 - Ferrous
 - Geology
 - Geomorphology
 - Historic Landscape Feature
 - Modern Service
 - Possible Archaeology
 - Former Field Boundary
 - Increased Response

NOTES

Contains OS data © Crown Copyright and database right 2025
Contains data from OS Zoomstack, Contains OS data © Crown copyright 2025
Historic England 2025. Contains Ordnance Survey data © Crown copyright and database right 2025. Data obtained November 2023

LEGISLATION

Regulation 5(2)(a) Infrastructure Planning (Applications: Prescribed Forms and Procedure) Regulations 2009.

ISSUE PURPOSE

DCO Submission

FIGURE TITLE

Geophysical Survey Plan

FIGURE NUMBER

Figure 7-6a Sheet 5 of 6

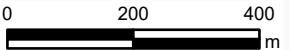
DOCUMENT REFERENCE

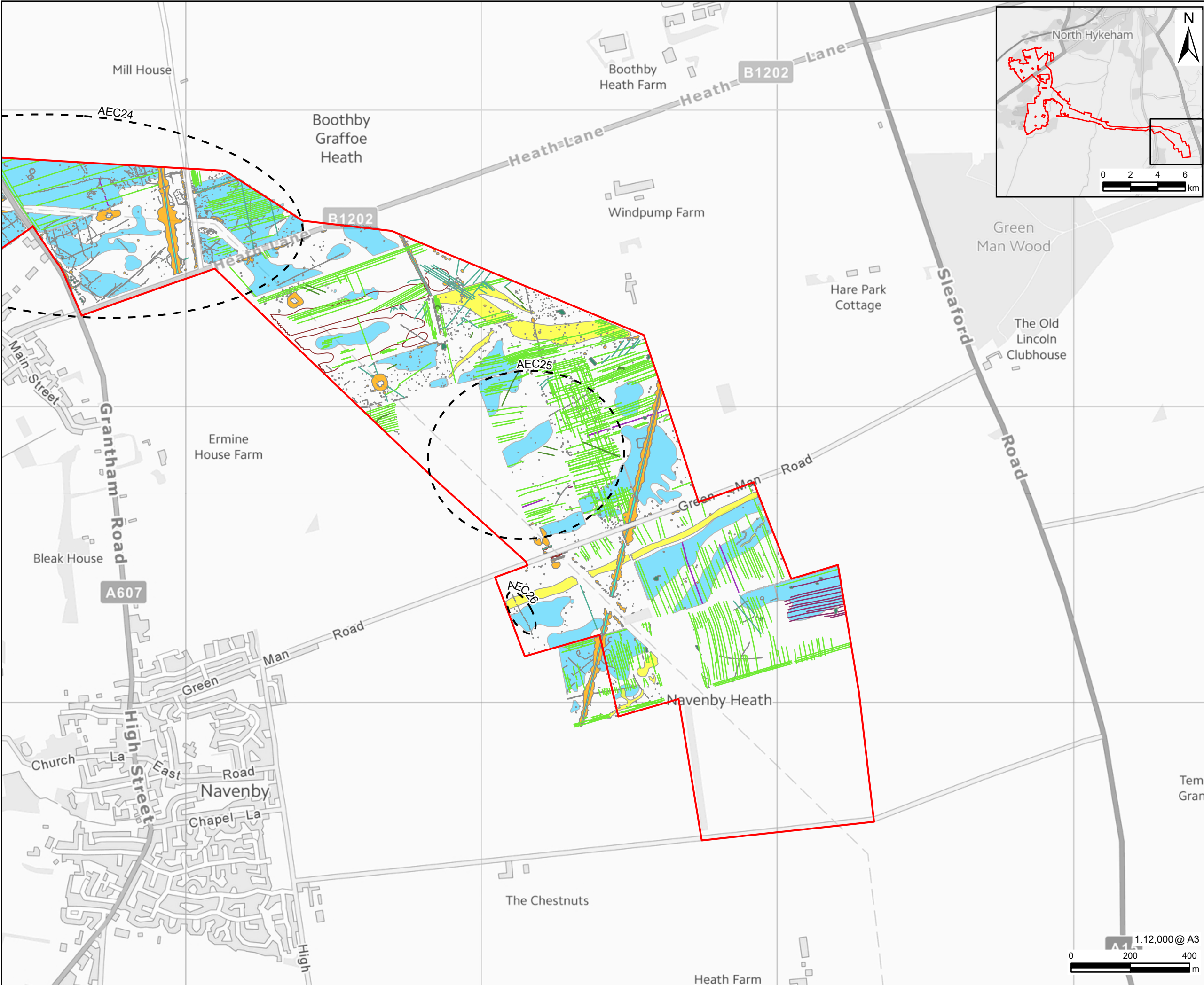
EN010154/APP/6.2.

REV.

02

1:12,000 @ A3





PROJECT

Fosse Green Energy

CLIENT

Fosse Green Energy Ltd

CONSULTANT

AECOM Limited
Sunley House
4 Bedford Park
Surrey, CR0 2AP, UK
[Redacted]

LEGEND

- DCO Site Boundary
- Geophysics Assets
- ES Geophysical Survey
 - Agricultural Trend
 - Trend
 - Drain
 - Historic Cultivation
 - Archaeology
 - Ferrous
 - Geology
 - Geomorphology
 - Historic Landscape Feature
 - Modern Service
 - Possible Archaeology
 - Former Field Boundary
 - Increased Response

NOTES

Contains OS data © Crown Copyright and database right 2025
Contains data from OS Zoomstack, Contains OS data © Crown copyright 2025
Historic England 2025. Contains Ordnance Survey data © Crown copyright and database right 2025. Data obtained November 2023

LEGISLATION

Regulation 5(2)(a) Infrastructure Planning (Applications: Prescribed Forms and Procedure) Regulations 2009.

ISSUE PURPOSE

DCO Submission

FIGURE TITLE

Geophysical Survey Plan

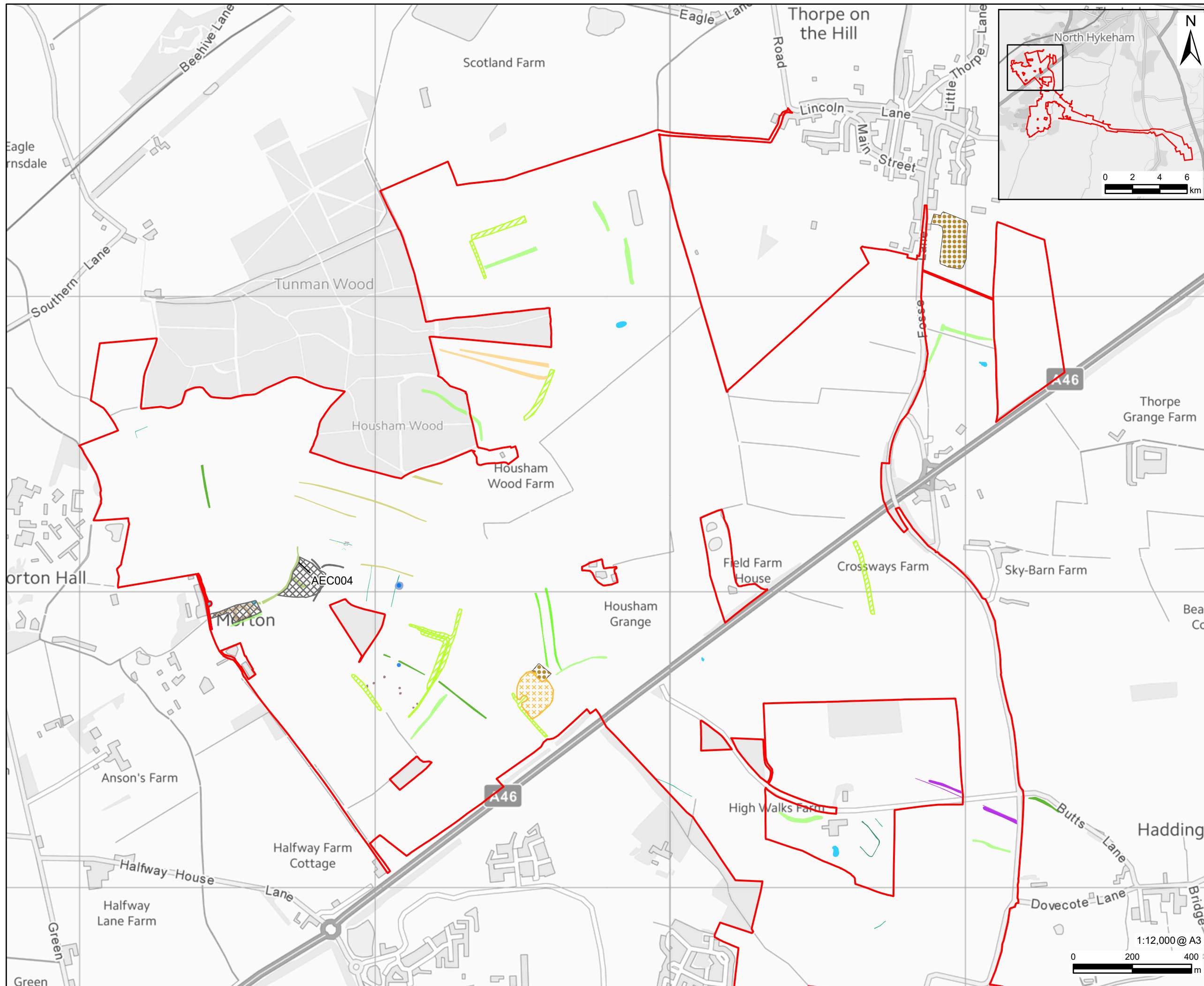
FIGURE NUMBER

Figure 7-6a Sheet 6 of 6

DOCUMENT REFERENCE

EN010154/APP/6.2.

This drawing has been prepared for the use of AECOM's client. It may not be used, modified, reproduced or relied upon by third parties, except as agreed by AECOM or as required by law. AECOM accepts no responsibility and denies any liability whatsoever, to any party that uses or relies on this drawing without AECOM's express written consent. Do not scale this document. All measurements must be obtained from the stated dimensions.



CLIENT

CONSULTANT

LEGEND

- ## NOTES

LEGISLATION

ISSUE PURPOSE

FIGURE TITLE

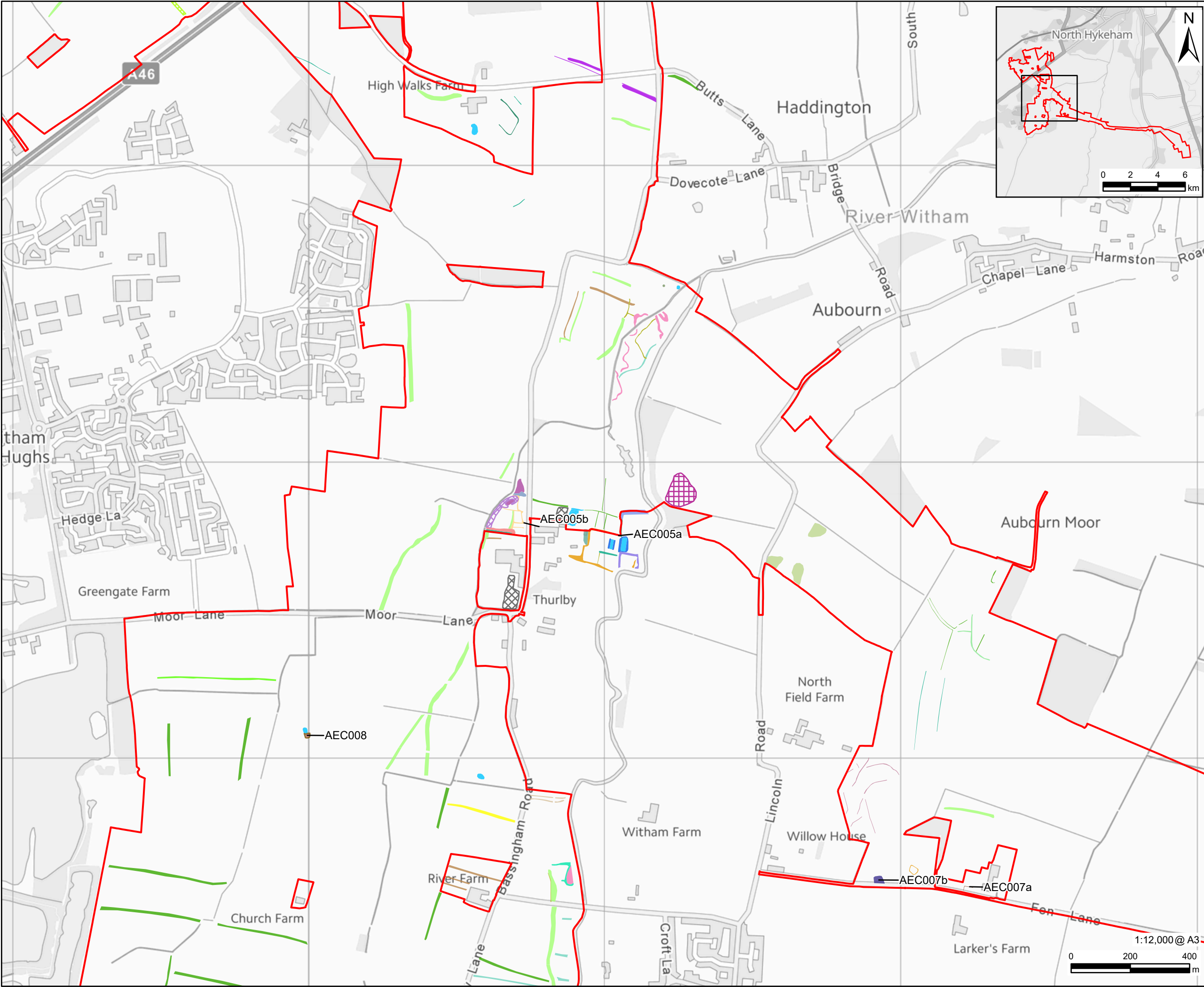
LiDAR Plan

FIGURE NUMBER	REV.
---------------	------

Figure 7-6b Sheet 1 of 6 02

DOCUMENT REFERENCE

EN010154/APP/6.2.





PROJECT

Fosse Green Energy

CLIENT

Fosse Green Energy Ltd

CONSULTANT

AECOM Limited
Sunley House
4 Bedford Park
Surrey, CR0 2AP, UK

LEGEND

DCO Site Boundary

Recent Disturbance

Bank Earthwork

Cottage

Ditch

Ditch/Natural Feature

Drainage Ditch

Enclosure

Enclosure/ Drainge Ditch

Enclosure/Moat

Field Boundary

Hollow

Hollow/Quarry

Lynchet

Mound

Natural Feature

Natural Feature/Pit

Palaeochannel

Pt/Dewpond

Plough Headland/ Field Boundary

Plough Headland/ Flood Defences

Pond

Pond/DAM

Rectilinear Enclosure

Road/Uncertain

Settlement

Spoil Heap

Strip Lynchet

Trackway

Trackway/Ridge

Wall

Baulk

Flood Defence

Mound - Dump

LiDAR - Ellipse Data

Stack Sand

NOTES

Contains OS data © Crown Copyright and database right 2025
Contains data from OS Zoomstack, Contains OS data © Crown copyright 2025
Historic England 2025. Contains Ordnance Survey data © Crown copyright and database right 2025. Data obtained November 2023

LEGISLATION

Regulation 5(2)(a) Infrastructure Planning (Applications: Prescribed Forms and Procedure) Regulations 2009.

ISSUE PURPOSE

DCO Submission

FIGURE TITLE

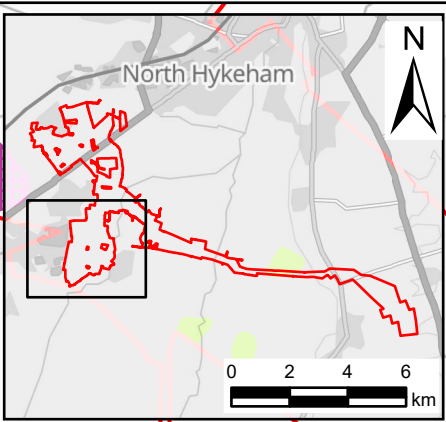
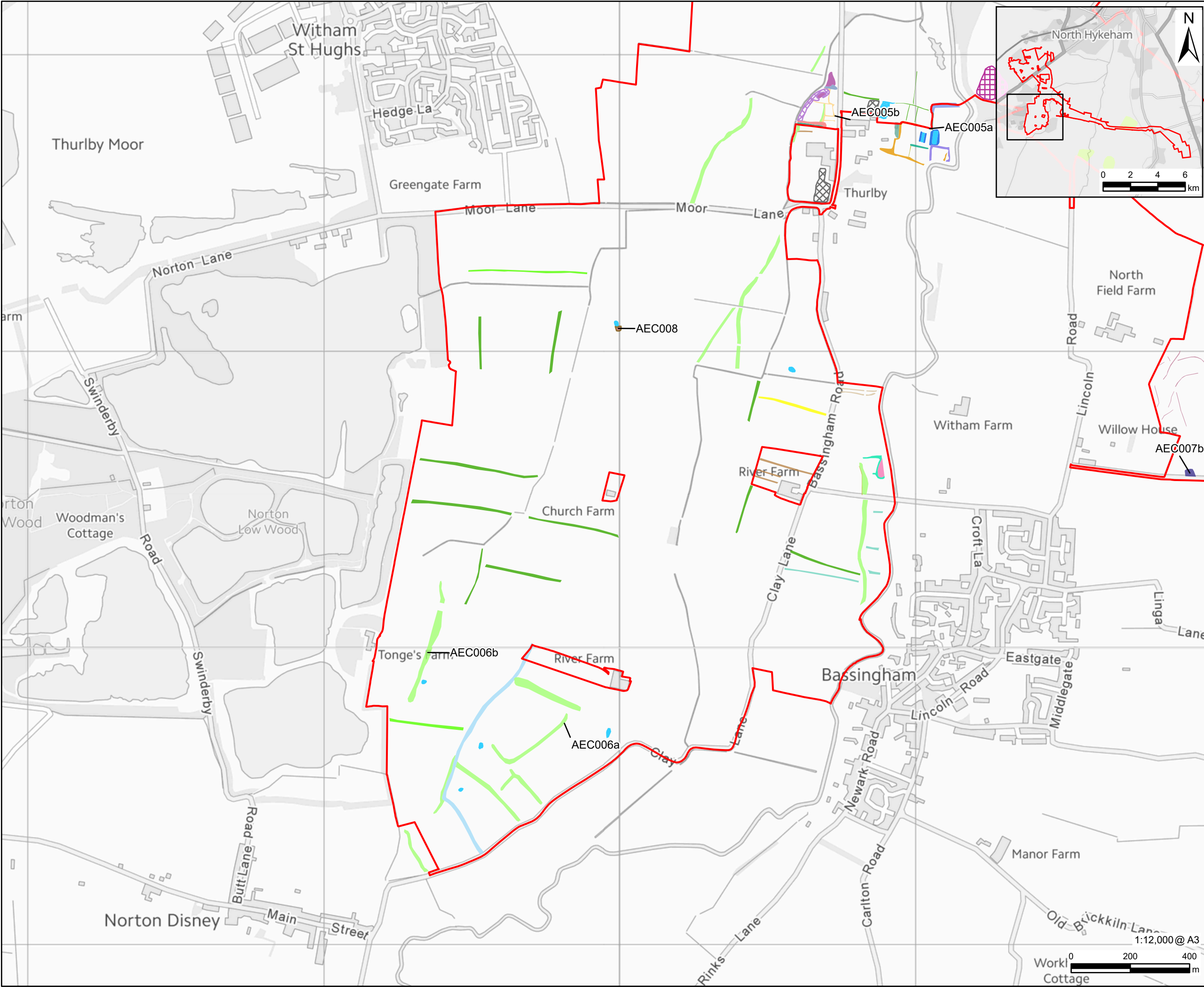
LiDAR Plan

FIGURE NUMBER **REV.**

Figure 7-6b Sheet 2 of 6 02

DOCUMENT REFERENCE

EN010154/APP/6.2.





PROJECT

Fosse Green Energy

CLIENT

Fosse Green Energy Ltd

CONSULTANT

AECOM Limited
Sunley House
4 Bedford Park
Surrey, CR0 2AP, UK
[Redacted]

LEGEND

DCO Site Boundary

Recent Disturbance

Bank Earthwork

Cottage

Ditch

Drainage Ditch

Drove Road

Enclosure

Enclosure/ Drainge Ditch

Enclosure/Moat

Field Boundary

Hollow

Hollow/Quarry

Lynchet

Mound

Natural Feature

Natural Feature/Pit

Palaeochannel

Pt/Dewpond

Plough Headland/ Flood Defences

Pond

Pond/DAM

Settlement

Spoil Heap

Strip Lynchet

Trackway

Trackway/Ridge

Baulk

Mound - Dump

NOTES

Contains OS data © Crown Copyright and database right 2025

Contains data from OS Zoomstack, Contains OS data © Crown copyright 2025

Historic England 2025. Contains Ordnance Survey data © Crown copyright and database right 2025. Data obtained November 2023

LEGISLATION

Regulation 5(2)(a) Infrastructure Planning (Applications: Prescribed Forms and Procedure) Regulations 2009.

ISSUE PURPOSE

DCO Submission

FIGURE TITLE

LiDAR Plan

FIGURE NUMBER

Figure 7-6b Sheet 3 of 6

REV.

02

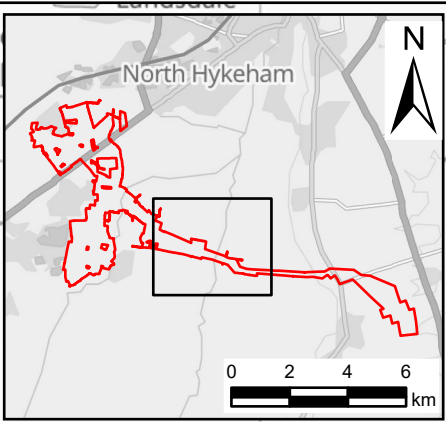
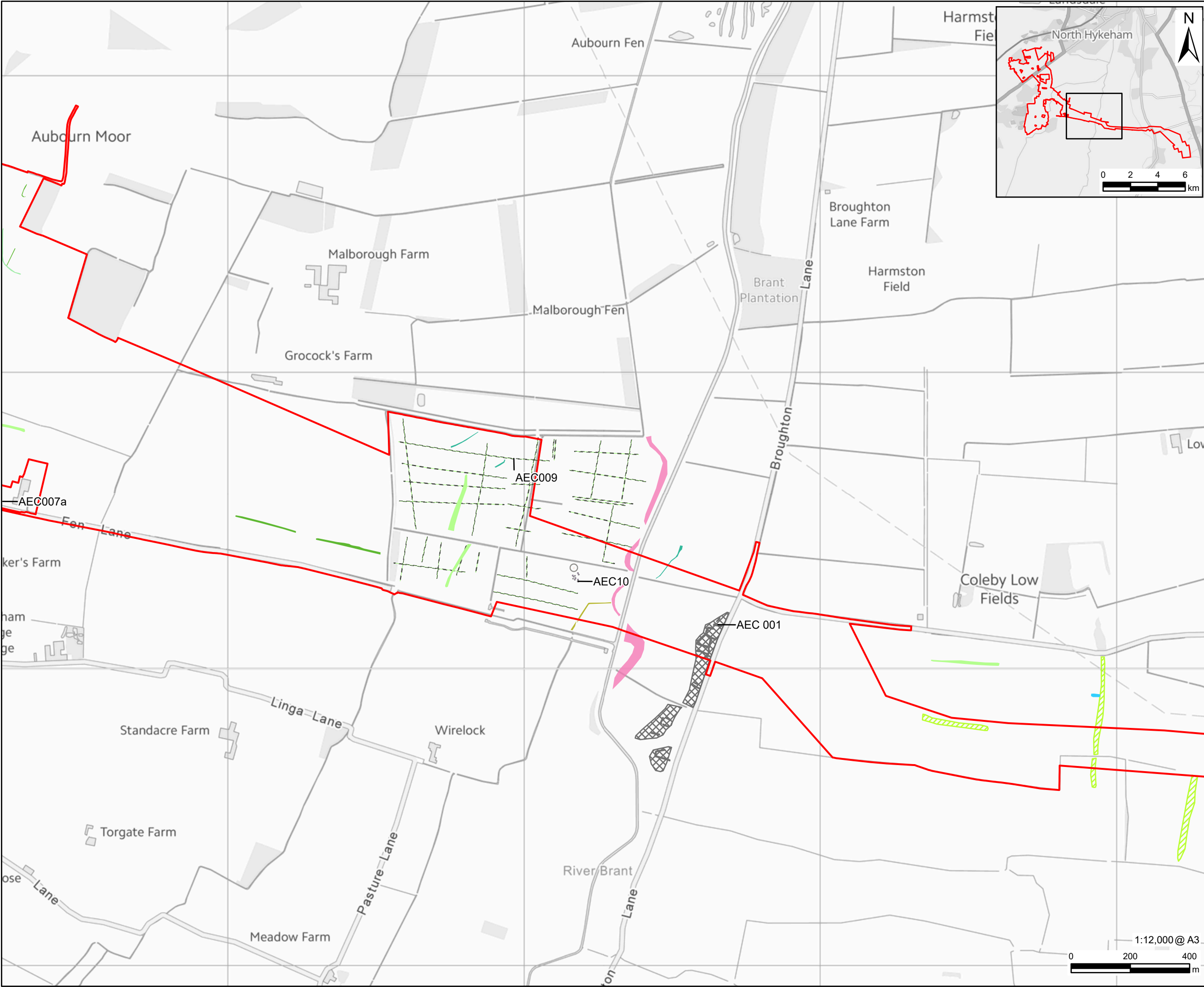
DOCUMENT REFERENCE

EN010154/APP/6.2.

1:12,000@ A3



This drawing has been prepared for the use of AECOM's client. It may not be used, modified, reproduced or relied upon by third parties, except as agreed by AECOM or as required by law. AECOM accepts no responsibility, and denies any liability whatsoever, to any party that uses or relies on this drawing without AECOM's express written consent. Do not scale this document. All measurements must be obtained from the stated dimensions.



PROJECT

Fosse Green Energy

CLIENT

Fosse Green Energy Ltd

CONSULTANT

AECOM Limited
Sunley House
4 Bedford Park
Surrey, CR0 2AP, UK

LEGEND

- | | |
|-----------------------|--------------------------------|
| DCO Site Boundary | Palaeochannel |
| LiDAR - Regional Data | Pt/Dewpond |
| Anti Landing Trench | Plough Headland/Field Boundary |
| Bomb Crater | Pond |
| Bombing Range Target | Settlement |
| Ditch | Wall |
| Ditch/Natural Feature | LiDAR - Ellipse Data |
| Drainage Ditch | Bombing Range Target |
| Field Boundary | |

NOTES

Contains OS data © Crown Copyright and database right 2025
Contains data from OS Zoomstack, Contains OS data © Crown copyright 2025
Historic England 2025. Contains Ordnance Survey data © Crown copyright and database right 2025. Data obtained November 2023

LEGISLATION

Regulation 5(2)(a) Infrastructure Planning (Applications: Prescribed Forms and Procedure) Regulations 2009.

ISSUE PURPOSE

DCO Submission

FIGURE TITLE

LiDAR Plan

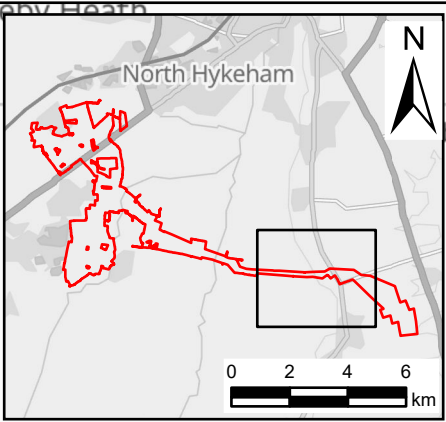
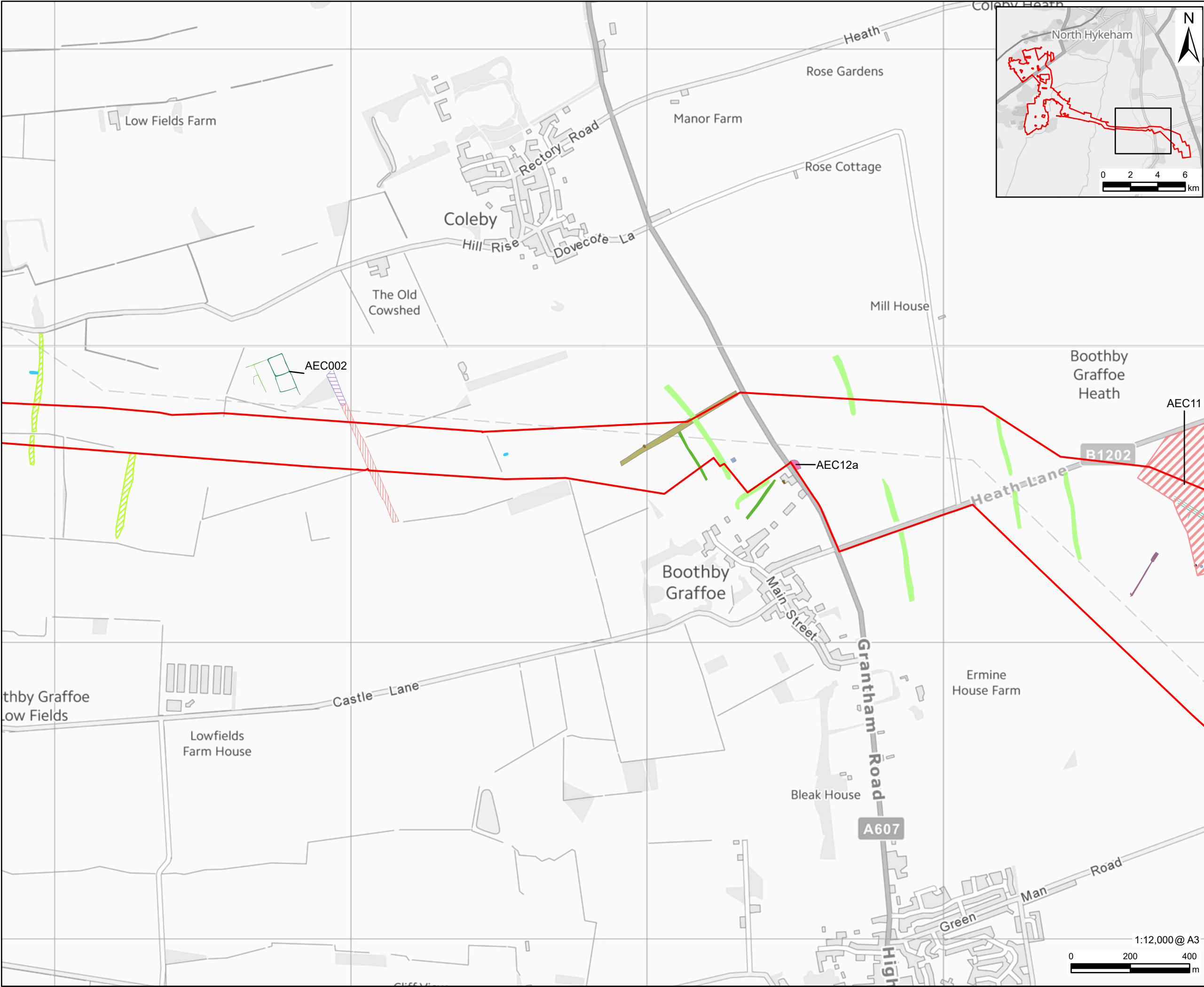
FIGURE NUMBER

Figure 7-6b Sheet 4 of 6

DOCUMENT REFERENCE

EN010154/APP/6.2.

1:12,000 @ A3
0 200 400 m



PROJECT

Fosse Green Energy

CLIENT

Fosse Green Energy Ltd

CONSULTANT

AECOM Limited
Sunley House
4 Bedford Park
Surrey, CR0 2AP, UK
[Redacted]

LEGEND

- | | |
|--------------------------------|--------------------------------|
| DCO Site Boundary | Hut |
| Antenna | Military Airfield |
| Barbed Wire | Mound |
| Obstruction/Building | Pt/Dewpond |
| Building | Plough Headland/Field Boundary |
| Beam Approach Beacon | Pond |
| Ditch | Railway Cutting |
| Field Boundary | Railway Embankment |
| Field Boundary/Parish Boundary | Rectilinear Enclosure |
| | Wind Pump |

NOTES

Contains OS data © Crown Copyright and database right 2025
Contains data from OS Zoomstack, Contains OS data © Crown copyright 2025
Historic England 2025. Contains Ordnance Survey data © Crown copyright and database right 2025. Data obtained November 2023

LEGISLATION

Regulation 5(2)(a) Infrastructure Planning (Applications: Prescribed Forms and Procedure) Regulations 2009.

ISSUE PURPOSE

DCO Submission

FIGURE TITLE

LiDAR Plan

FIGURE NUMBER

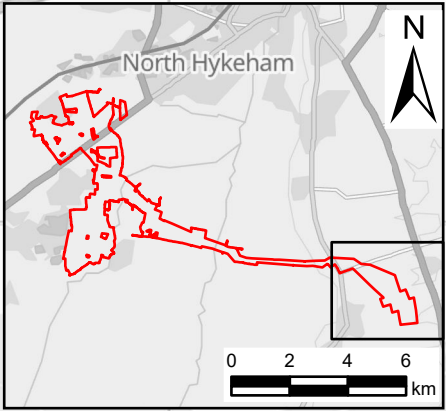
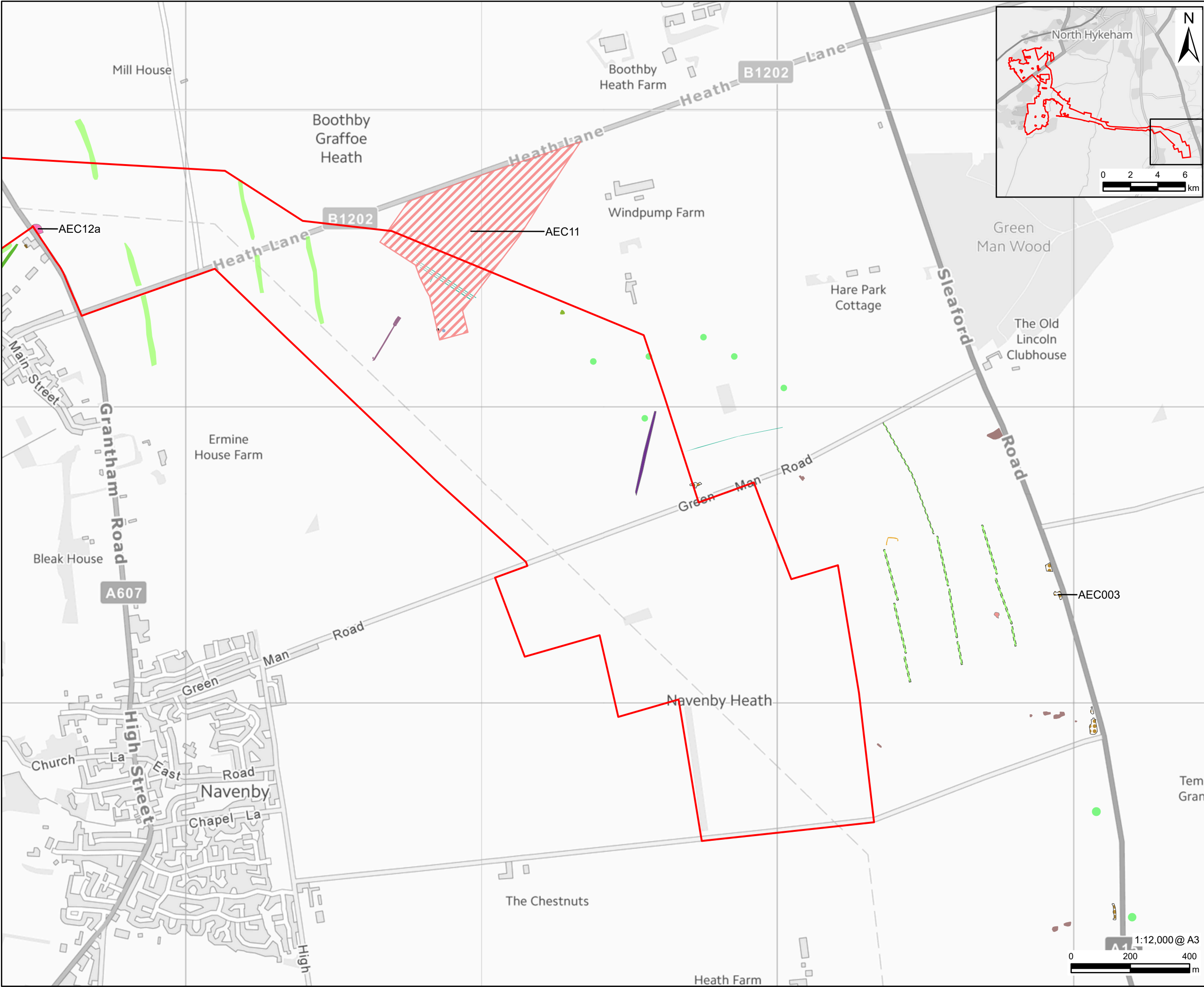
Figure 7-6b Sheet 5 of 6

DOCUMENT REFERENCE

EN010154/APP/6.2.

1:12,000 @ A3
0 200 400 m

This drawing has been prepared for the use of AECOM's client. It may not be used, modified, reproduced or relied upon by third parties, except as agreed by AECOM or as required by law. AECOM accepts no responsibility, and denies any liability whatsoever, to any party that uses or relies on this drawing without AECOM's express written consent. Do not scale this document. All measurements must be obtained from the stated dimensions.



PROJECT

Fosse Green Energy

CLIENT

Fosse Green Energy Ltd

CONSULTANT

AECOM Limited
Sunley House
4 Bedford Park
Surrey, CR0 2AP, UK

LEGEND

- | | |
|----------------------|----------------------|
| DCO Site Boundary | Field Boundary |
| Antenna | Hut |
| Anti Landing Trench | Military Airfield |
| Barbed Wire | Mound |
| Obstruction/Building | Pit |
| Building | Pit/Dewpond |
| Beam Approach | Pt/Dewpond |
| Beacon | Quarry |
| Dewpond | Road/Unknown |
| Ditch | LiDAR - Ellipse Data |
| Enclosure | Dewpond |

NOTES

Contains OS data © Crown Copyright and database right 2025
Contains data from OS Zoomstack, Contains OS data © Crown copyright 2025
Historic England 2025. Contains Ordnance Survey data © Crown copyright and database right 2025. Data obtained November 2023

LEGISLATION

Regulation 5(2)(a) Infrastructure Planning (Applications: Prescribed Forms and Procedure) Regulations 2009.

ISSUE PURPOSE

DCO Submission

FIGURE TITLE

LiDAR Plan

FIGURE NUMBER

Figure 7-6b Sheet 6 of 6

DOCUMENT REFERENCE

EN010154/APP/6.2.

